

Historic, archived document

Do not assume content reflects current scientific knowledge, policies, or practices.

62,41

U. S. Department of Agriculture

KNIGHT'S

"Pure Bred" PLANTS



Grand Champion.

Outstanding New Varieties

Grand Champion

The sensational new Strawberry.
Read description on page 3.

Chief

Below—Chief, a new early Red
Raspberry. Seedling of Latham but
a heavier cropper.

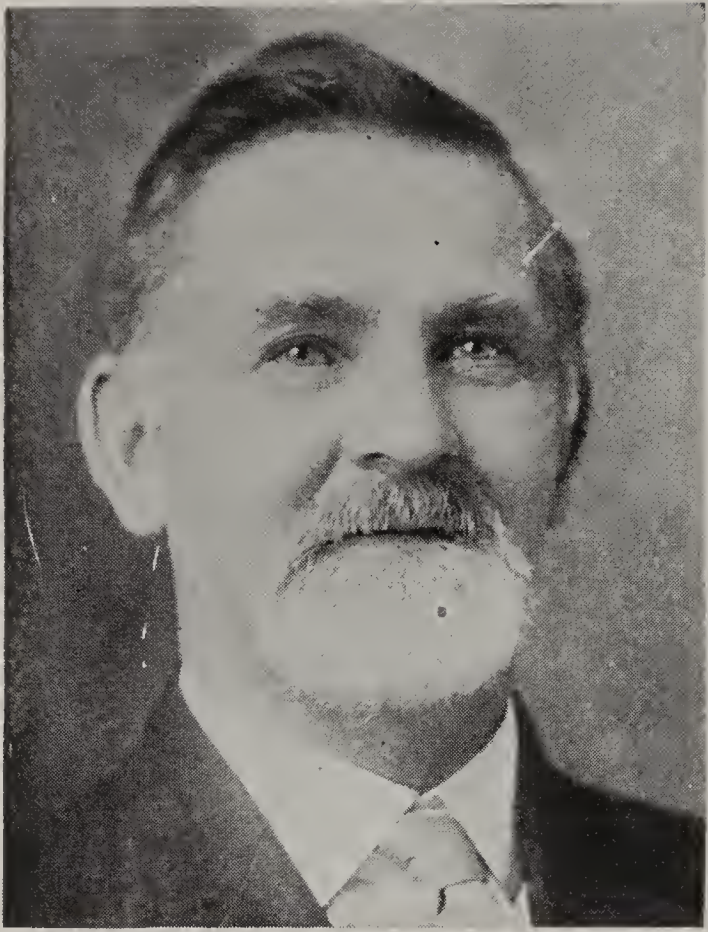
**DAVID KNIGHT
& SON**

SAWYER, MICHIGAN

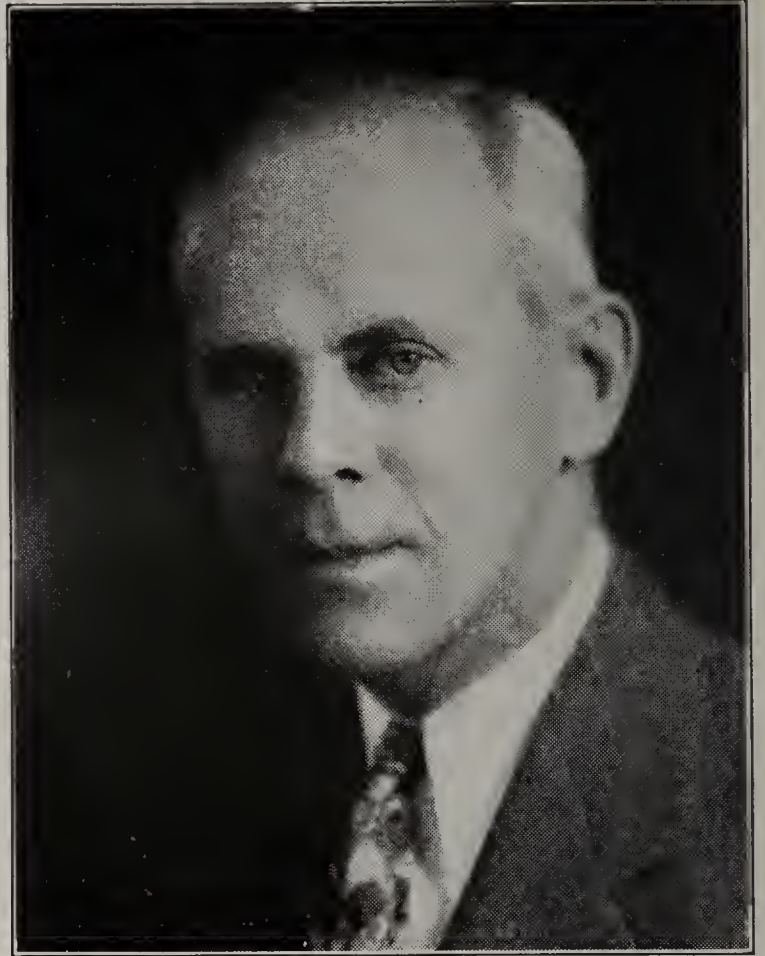
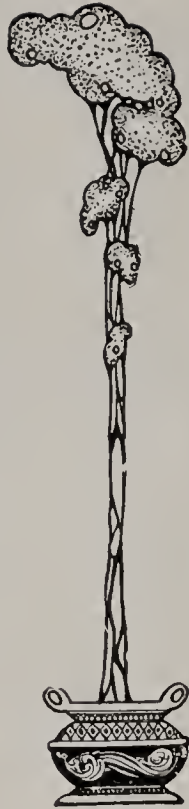


Chief
Red Raspberry.

*Season
of
1935*



DAVID KNIGHT
 Founder of the business in 1880.



A. R. KNIGHT.
 Present owner and manager.

To Our Old Customers

FOR the past several years we have been supplying plants to customers of one of the country's largest mail order houses. All merchandise sold by this firm must be the best—nothing less is tolerated—and it is gratifying to us that, among so many growers, our company is selected year after year as their source of supply for small fruit plants. It is a tribute to the quality of our stock and the methods used in our business for more than half a century.

Many thousands of plants are needed every spring to supply these orders and that is the reason we have not advertised or increased the size and cost of our catalog for the past five or six years.

Many of you have been using Knight's plants for ten or fifteen—some for twenty-five or thirty years, and a few for even a longer period. We want you to know we appreciate your loyalty and that we will always take care of your needs with the best stock that can be grown. We haven't enough stock to take on a thousand or two extra customers, but we can supply you and your friends, so if you have a neighbor or two who needs plants this spring, have them include their order with yours, or write for a catalog, which we will gladly send. However, owing to extremely hot and dry weather last summer, the plant crop all over the country is very short—which means a heavy demand—so we urge you to place your order just as early as possible.

Plants Required To Set An Acre

	Plants
Strawberries (commercial use)	3 ft. 8 in.x1½ ft. 7,920
Strawberries, Everbearing ...	2½ ft.x1½ ft. 11,600
Strawberries (garden use) ...	2½ ft.x1½ ft. 11,600
Black Raspberries	7½ ft.x3½ ft. 1,777
Red Raspberries	6 ft.x3 ft. 2,420
Blackberries	7 ft.x3½ ft. 1,777
Dewberries	6 ft.x3 ft. 2,400
Currants	5 ft.x4 ft. 2,200
Gooseberries	5 ft.x4 ft. 2,200
Grapes	8 ft.x10 ft. 540
Grapes	8 ft.x12 ft. 440

Our Guarantee is Your Protection

We guarantee every article shipped from our nursery to be healthy, vigorous and true to name, also that all shipments will reach you in good growing condition. If not we are to be notified within five days after arrival when we will either replace with fresh stock or return your money. It being understood that we are not to be held liable for more than the original purchase price.



Dorsett
Strawberries.

DORSETT *and* FAIRFAX

You have heard much of these two, and they will probably supplant most early varieties we are now growing, as they have been proven successful over a wide area and produce the kind of fruit that meets with highest prices in all markets. Both are of scientific origin by the U. S. Department of Agriculture, being seedlings of Premier and Royal Sovereign, the latter an English variety long known for its high dessert qualities.

Dorsett is somewhat more productive than Fairfax, but they are both heavy producers and the berries average very large, uniformly larger than Premier. Dorsett berries are medium light in color while Fairfax are medium dark, both are very firm

making them splendid shipping varieties. In quality these two berries set a new standard. Some like Dorsett better, some Fairfax, but both are superior to most any other sort and daily bring higher prices in market on this account together with their size and beautiful appearance.

Both Dorsett and Fairfax are practically immune to disease, make very vigorous plant growth and maintain their vigor and health of foliage during the entire fruiting season. Don't fail to set Dorsett and Fairfax this year, for they are the coming market berries.

GRAND CHAMPION

You will see Grand Champion in very few nursery catalogs this spring, for, while it was discovered and has been grown for ten years by a farmer living near New Albany, Ind., he kept it for his own use, supplying local markets and daily getting better prices than for other varieties owing to the large size, beautiful color and excellent quality of the fruit.

The writer being in New Albany in the spring of 1932 and hearing about this wonderful new variety, called on the owner and was so impressed that he bought a quantity of the plants to be delivered the following spring and, with another nurseryman, introduced Grand Champion for the first time last season. As you all know, last spring was disastrous for strawberries. This great strawberry county—Berrien—had as nearly a complete failure as we have experienced in fifty years. Under such conditions Grand Champion, or any other variety, could not make a reputation for itself. But it did produce more and better fruit than any other variety we picked last spring and we honestly believe it will prove one of the biggest money making varieties grown. It ripens a little later than Premier and continues until the late varieties are gone—from 35 to 40 days. The outstanding qualities of Grand Champion are its wonderful productiveness, large size and handsome appearance of the fruit and the health and vigor of the plant growth. Order 500 or a thousand—or more—Grand Champion this year for I really believe they will make you more money than any variety you are now growing.



A. R. KNIGHT



Mastodon

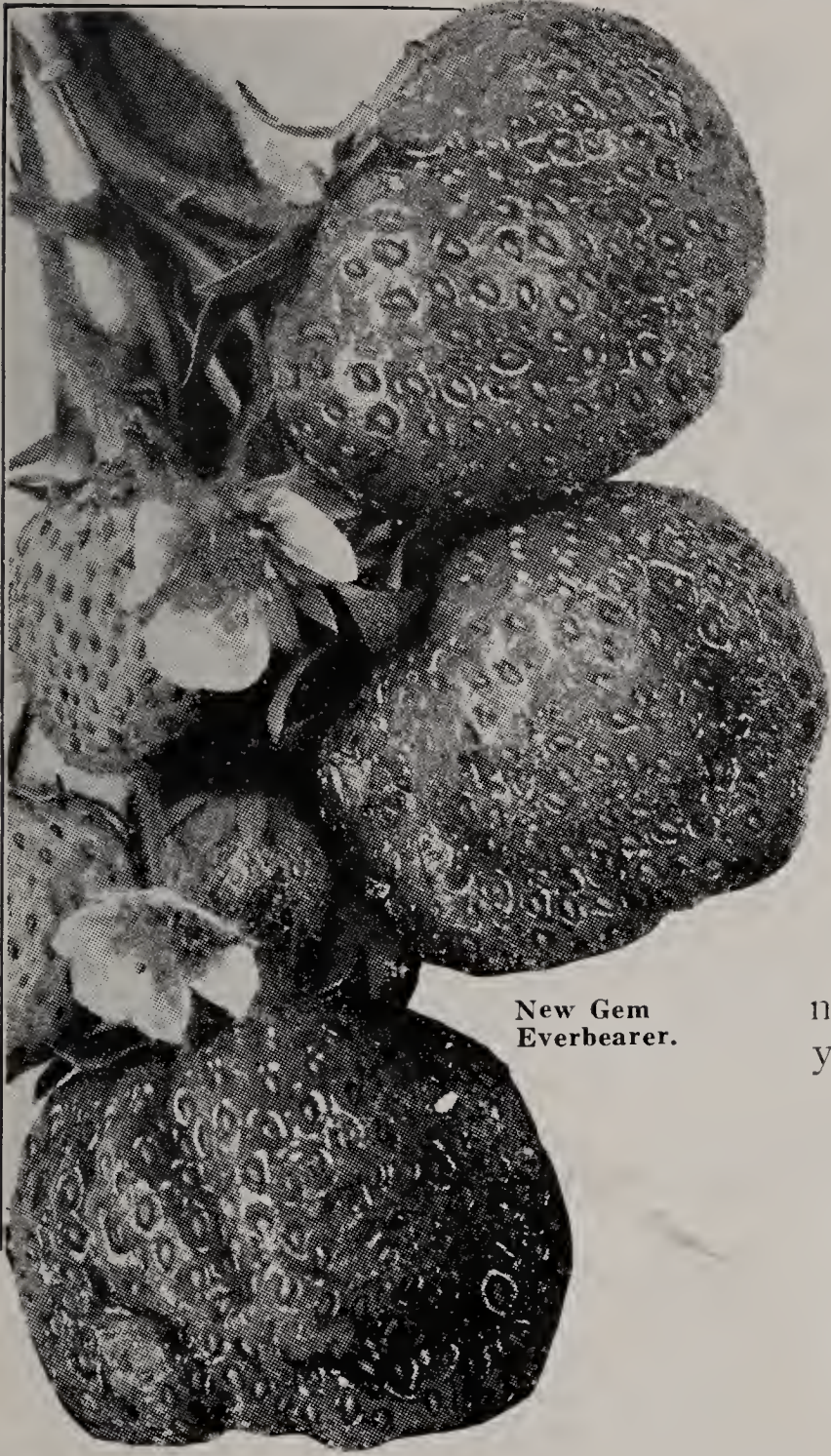
Everyone interested in Strawberries has heard and read so much about Mastodon that a description of it is a repetition of what you already know; however, it will bear repeating that Mastodon is a real Everbearing success. It does produce enormous size berries of excellent quality three months after setting in spring and it does continue to bear all summer and fall with a second crop the following spring, but it has been our experience that it is more profitable to set a Mastodon patch every spring and harvest two crops than to carry the patch over for the second fall crop.

Mastodon is recognized as the most profitable and dependable Everbearer grown, and our Mastodon plants are the true strain, grown and selected with great care, all weak and unproductive plants thrown out, so you are certain to get the best plants money can buy when ordering KNIGHT'S MASTODON. Try growing a patch this year, setting the plants close together—from 6 to 8 inches—keep all runners removed, thus allowing them to stool up and form large fruiting surfaces. You will be surprised at the enormous crop of fancy berries you will grow.

Set a large patch of Mastodon this spring and see it pay for itself many times over before winter. Prices on page 23.



Mastodon and Apples Ripe at the Same Time.



New Gem
Everbearer.

New GEM Everbearer

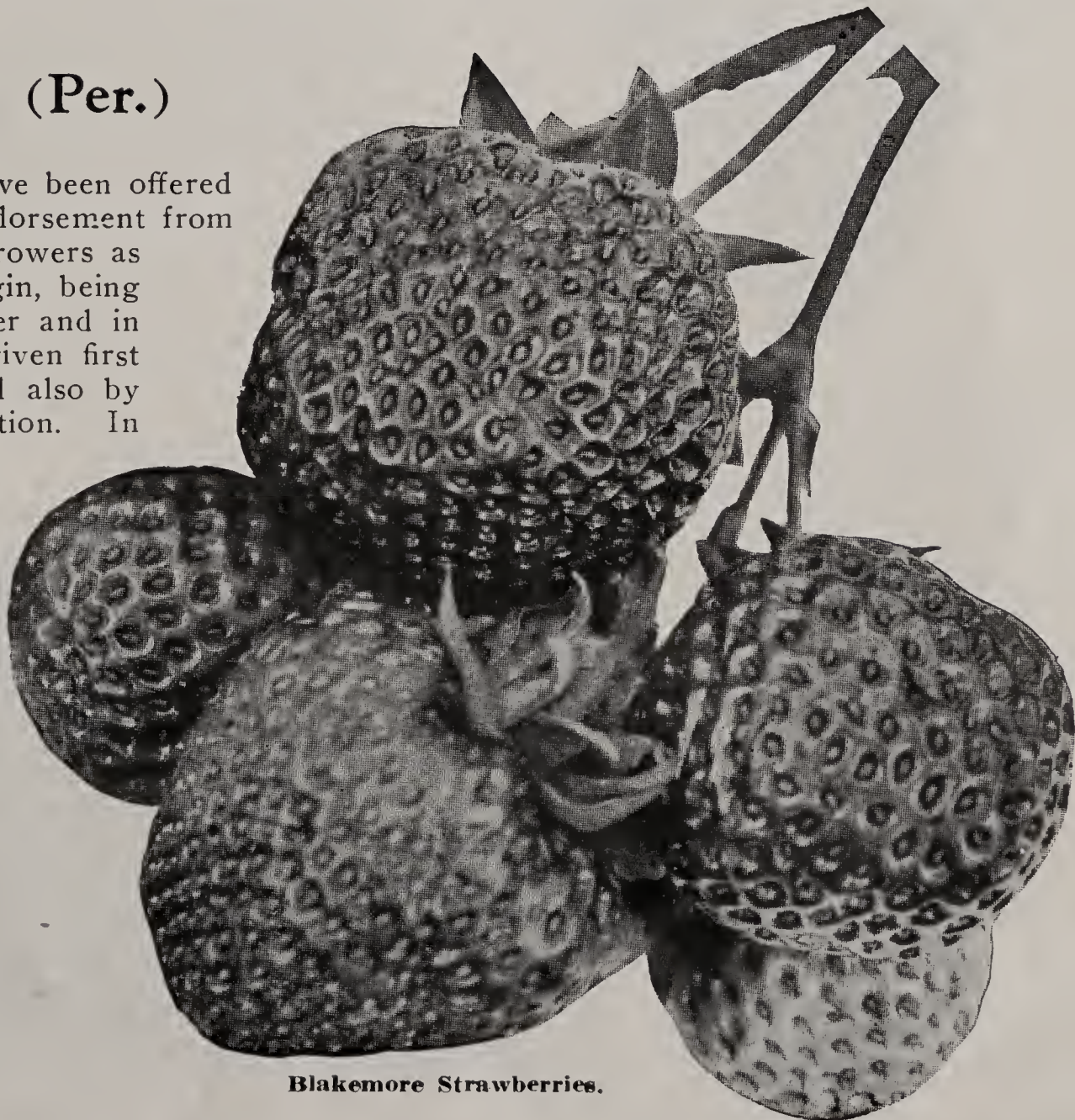
This new Everbearing Strawberry is making great progress, and we hear only praise of it from all sections of the country. It differs from other everbearers, principally in its ability to produce new plants freely and thus build up a good fruiting row. The plants are not large like Mastodon, but very vigorous, and will grow and make new plants as well as any of the spring sorts. Gem berries are a little lighter in color than Mastodon, nearly round, of good size and very attractive in the package. It has a rich sweet flavor, the flesh is of fine texture and so firm that it will stand shipping better than any other Everbearer. The supply of plants is very limited this season, probably not enough to meet all requirements, so don't delay in placing your order for them.

Take advantage of 10% cash discount
for orders received before March 1st.
See page 23.

Blakemore (Per.)

Few varieties of strawberries have been offered to the public with such strong endorsement from agricultural stations and private growers as Blakemore. It is of scientific origin, being a cross of Missionary and Premier and in the various tests made has been given first place by U. S. Plant Stations and also by the National Preservers Association. In shape and color it much resembles its parent, Premier, but it is somewhat earlier than that variety. It makes new plants much more freely and it is a heavy producer of fancy highly colored fruit, like Premier. Its beautiful bright red color, tough skin, firm flesh and excellent flavor make it very desirable for preserving and it will stand longer after picking and reach market in better condition than any other sort.

We have an excellent supply of Blakemore this spring. The price is right, and we advise planting heavily of it for it is one of the biggest money makers grown. Prices on page 23.



Blakemore Strawberries.



Premier.

Premier Howard No. 17 (Per.)

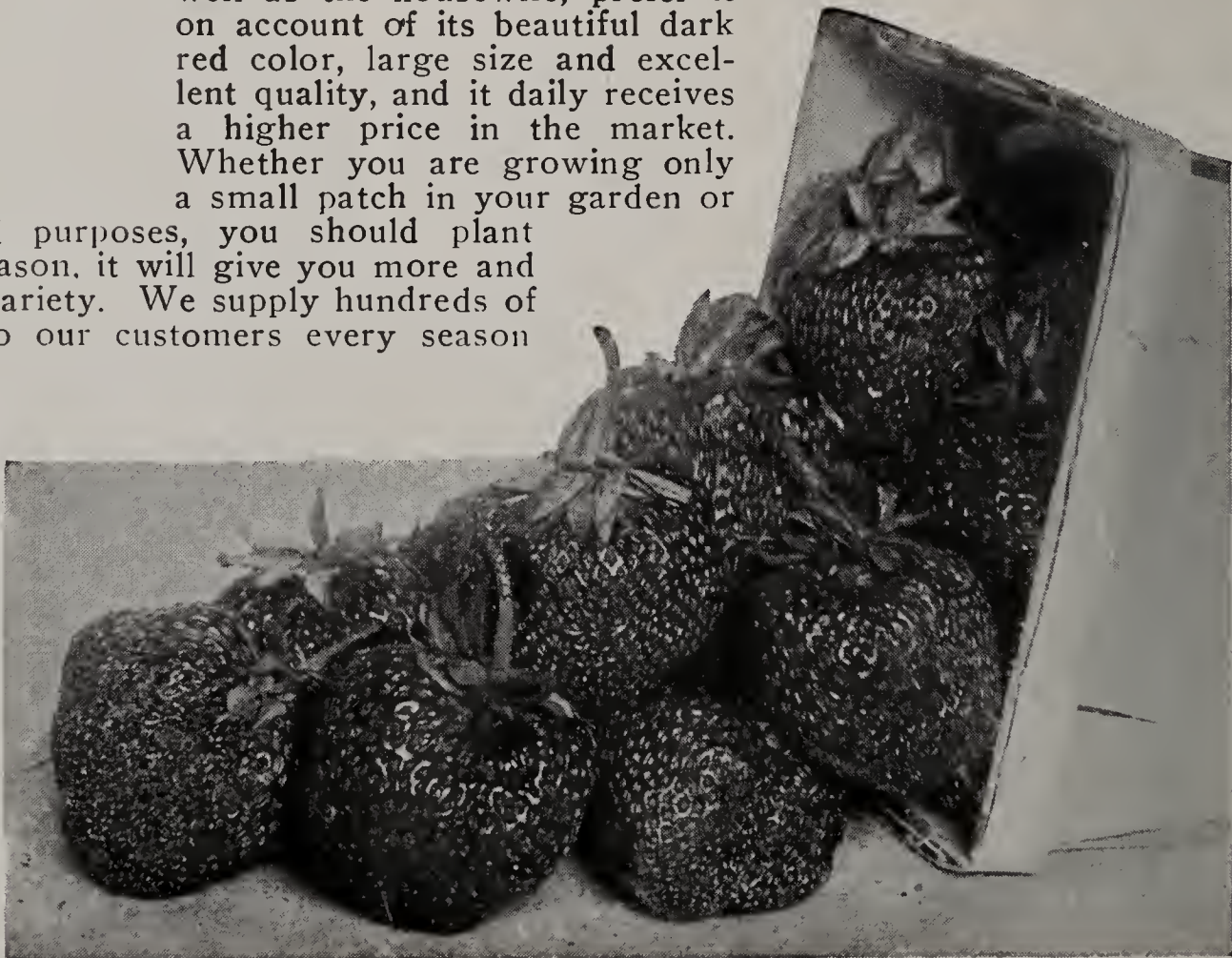
We have discarded nearly all other early varieties because Premier is so superior to them, not only here but in every other section of the country where Strawberries are grown. Some of the outstanding characteristics of Premier are: Handsome, glossy rich red color; size large to very large and beautifully uniform and symmetrical in shape; quality delicious, unsurpassed by any other variety. Very firm, making it an excellent shipping berry. Immensely productive. No variety will yield more fruit to the acre, as it ripens early and continues through a long season. As frost-resistant as a berry can be. Makes a good growth of strong, healthy plants which produce good crops when less sturdy sorts fail. Should have good soil and care but will do well on any soil in any climate. We had the opportunity to be on several of the large markets when berries were being brought in and sold last season and there was scarcely a day that Premier did not bring a premium of from 50c to \$1.00 per crate over most other varieties. Premier and Howard No. 17 are very similar if not identical, although the variety was first introduced under the latter name. You can order either Premier or Howard No. 17 with the assurance that you will receive the best early Strawberry ever known. Prices on page 23.

Knight's Wonderful Midseason Gibson (Per.)

Has Made More Money for Fruit Growers Than Any Other Variety Ever Grown.

No better midseason Strawberry has ever been grown than Gibson. It was our privilege to introduce this variety about fifteen years ago and we have always considered it one of our greatest achievements. Gibson will grow and produce wonderful fruit over a wider area of country and more diversified soil and weather conditions than any other Strawberry we know. Canning factories, as well as the housewife, prefer it on account of its beautiful dark red color, large size and excellent quality, and it daily receives a higher price in the market. Whether you are growing only a small patch in your garden or

several acres for commercial purposes, you should plant heavily of Gibson for, in its season, it will give you more and better berries than any other variety. We supply hundreds of thousands of Gibson plants to our customers every season and the fact that they are so largely and widely grown is proof of their value. We have a large and excellent supply of Gibson plants this season, carefully grown, healthy, true to name and priced right. Let us have your order. Price on page 23.



Gibson.

**Don't Overlook
Free Glad Bulbs
and Cash
Discount for
Early Orders**

Knight's Reliable Midseason Dunlap (Per.)

"KING OF THE
CANNERS"

For more than 25 years Senator Dunlap has been a big money maker for commercial Strawberry growers. It makes plants freely,

assuring an ample fruiting bed; it does well on any type of soil and in any section of the country and it produces enormous crops of good sized, excellent quality berries that are a dark, rich, beautiful color—

red all the way through. One of our customers sold \$4,230 worth of fruit from a 4½-acre patch of Dunlap and Gibson. Nearly \$1,000 to the acre for so large a patch is a wonderful showing and was due largely to the use of two such good varieties as Dunlap and Gibson. See page 23 for prices.

Aroma (Per.)

LATE

One of the old standard varieties that, in certain sections, continues to be a favorite in spite of the many new varieties being introduced. Fruit is very large, bright red in color to the center, and has a delicious flavor. It is productive and firm of texture, making it a great shipping berry. It has a long fruiting season and continues good until the end. The demand for this variety is usually far in excess of the supply. See page 23 for prices.

Cooper (Per.)

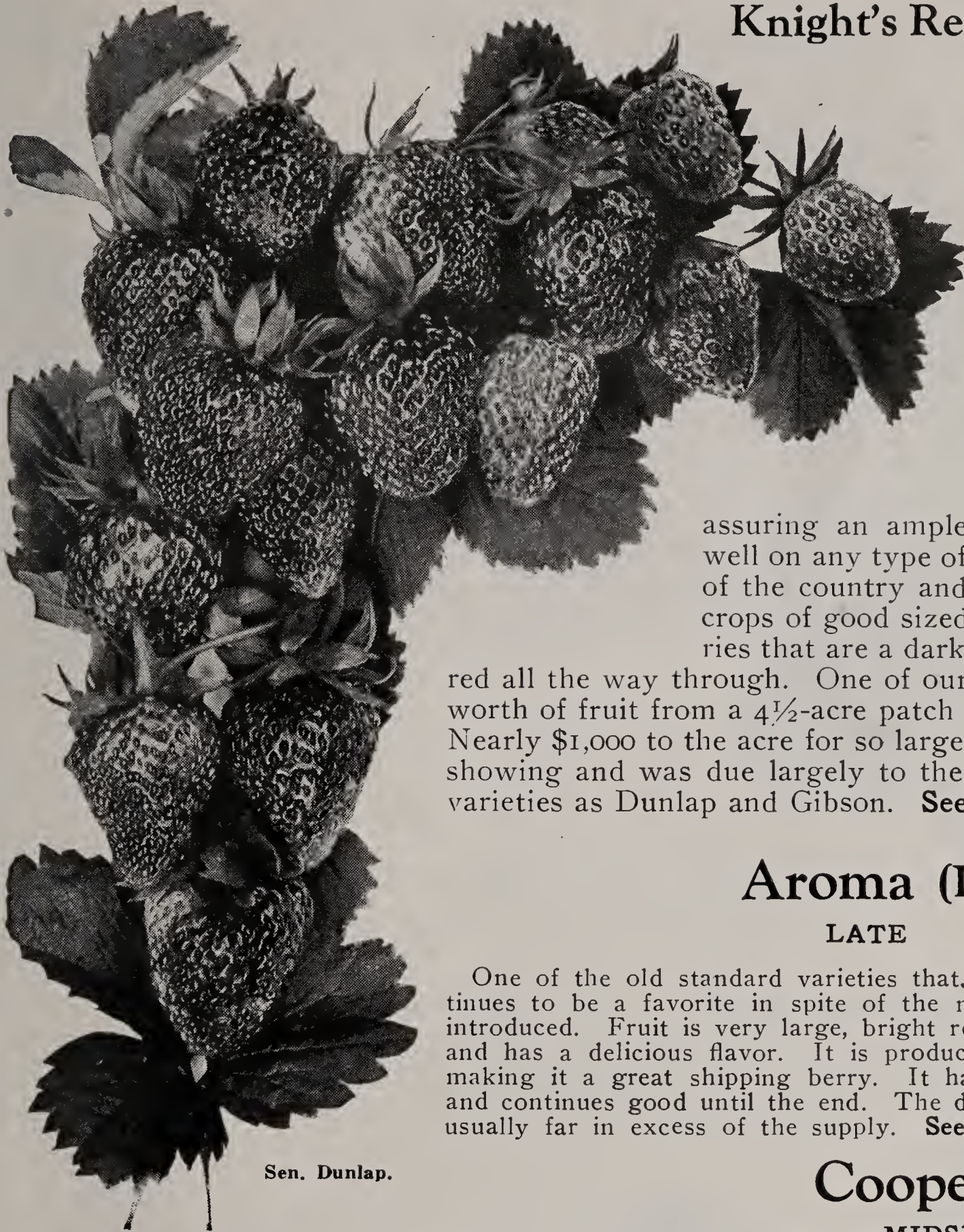
MIDSEASON

This variety has had a wonderful sale during the past few years and it seems to merit the confidence placed in it. Cooper is probably the largest Strawberry grown and it is also a heavy cropper, so the amount of fruit produced is enormous. It is a mid-season, staminate variety. The fruit is of a beautiful bright red color and of excellent quality. On account of its large size and beautiful appearance it sells at a premium over most other sorts and is especially recommended for supplying home markets. Prices on page 23.

Dr. Burrill (Per.)

MIDSEASON

It is claimed that Dr. Burrill is an improved Dunlap. We can find very little, if any, difference between them. But it is surely a wonderful producer of good size, handsome color and fine quality berries, and is very profitable to grow on account of the immense crops produced. For home use, home market or distant shipping it will give good service and we recommend planting freely of it. See page 23 for prices.



Sen. Dunlap.

Pearl (Per.)

LATE

A wonderful late variety that is needed by every Strawberry grower. It is the latest June berry and its large fancy fruit always demands a good price in market as other varieties are then nearly gone. Plants of Pearl are strong and healthy, producing enormous dark red berries of the very finest quality. Prices on page 23.

Beauty (Per.)

LATE

This is a late berry that has only praise wherever grown. The leaves are larger, fruit stems longer and entire plant stronger than most any other variety. The fruit is produced in immense quantities and it is large, beautifully formed and of the best quality. Get a supply of our pure Beauty plants this spring if you want a late berry of exceptional merit. See page 23 for prices.

Knight's "Pure Bred" Black Raspberries



Black Pearl.

Black Raspberries should be set from 3 to 3½ feet in the row and the rows 7 feet apart. As soon as growth starts and plants are from 18 to 20 inches high, pinch out the top of each cane, which causes them to send out laterals and gives a larger fruiting surface for the next year.

Red Raspberries should be set 2 feet in the row, and the rows 6 to 8 feet apart. Do not pinch off the tips of these, but the rapid growing kinds, such as Cuthbert, should be cut back somewhat in the spring.

After the fruiting season of both reds and blacks, cut out the old wood, thus allowing the new stalks to make a good growth for the coming season. See prices on page 9.

Black Pearl

The Best Early Blackcap.

Year after year this wonderful early blackcap maintains its superior value and grows in public esteem. Although originated in Western Missouri, where it is grown more widely and more profitably than any other sort, it has now been thoroughly tested in every section where Raspberries are grown and always with wonderful success. Black Pearl ripens from a week to ten days earlier than Cumberland and when planted with that grand old variety will give you a length of season and quality and size of fruit that cannot be produced in any other way. It is deeper rooted than any other blackcap and

for that reason is the best drought resister, often ripening a good crop of fruit when the berries of other varieties dry up on the vines. We have a good supply of Black Pearl this year and the quality is excellent. We urge you to order freely as we know you will be more than pleased when fruiting time comes. See prices on page 9.

Cumberland The Old Standby—None Better

No Black Raspberry is grown as extensively and none has made as much money for fruit growers as Cumberland. Wherever blackcaps can be grown, Cumberland is grown, and with wonderful success in all sections. Cumberland plants are healthy, vigorous growers, throwing up stout, stocky, well branched canes that produce immense crops of magnificent berries—large, a rich black in color, firm and of the highest quality. They ripen their fruit in midseason

and continue in bearing for two or three weeks. Cumberland is less susceptible to disease than most varieties and if planted on well drained land and properly cultivated, hoed and pruned, a patch once established will produce profitable crops for several years.

Our Cumberland, as well as all other Raspberries, are inspected twice each year by the State Department of Agriculture and you can depend upon it that our stock is healthy, vigorous and true to name. If you will take our advice and set a good sized acreage of Black Pearl and Cumberland you will have a patch that will be a surprise to your neighbors and a pleasure and profit to yourself. See prices on page 9.



The CUMBERLAND Black Raspberry, largest of our standard Blackcaps, and a sure moneymaker.

Red Raspberries

Latham Red Raspberries.

Latham

A Wonderful Success Wherever Planted.

Every Agricultural College and every fruit grower testing Latham has reported very favorably as to the large size and excellent quality of its fruit; its entire resistance to frost during the coldest winters and the enormous quantities of fruit it will produce. The Connecticut Agricultural College have a record of 5,430 quarts per acre from a three-year-old patch.

Latham ripens its fruit at same time as Cuthbert or a week to ten days later than King. It is large, handsome and delicious from beginning—an excellent shipping variety—and last summer sold for as much as \$1.00 per crate more than other varieties. Our supply of Latham plants is of unexcelled quality, being positively pure and disease free.



CHIEF—The New Red Raspberry

Here is a wonderful Red Raspberry that is forging ahead as fast as did its illustrious ancestor, Latham, and it has just as important a place to fill for it is ten days earlier than Latham, ripening at a time when Red Raspberries bring the most on all markets. Chief was originated at Minnesota State Fruit Breeding Farm and is a selection from 4000 seedlings of Latham. It is immensely productive, even surpassing Latham in that respect, the berries are of good size and excellent quality and the bushes are absolutely hardy and resistant to disease. We consider Chief the most outstanding Red Raspberry that has been produced in years and believe these two, Chief and Latham, will make more money for fruit growers than any other two they can grow, combining, as they do, a long fruiting season, extra heavy yield and fruit of such size, color and quality as to command top prices at all times.

King

This variety has been our principal early market berry for a number of years and in many sections it is more extensively grown than any other sort. It ripens early, coming with the last of strawberries, about July 1st. The berries are of fairly good size, the quality is good and it is an immense cropper. King is not particular as to soil or location, seeming to thrive equally well in light or heavy ground. It is a thoroughly dependable variety.



The KING Red Raspberry Ripens Early.

KNIGHT'S RASPBERRY PRICES

	25	50	100	1000
Cumberland	\$0.75	\$1.25	\$2.00	\$13.50
Black Pearl	.75	1.25	2.00	13.50
Latham	.80	1.40	2.40	16.00
King	.80	1.40	2.40	16.00
Chief	.80	1.40	2.40	16.00

Quantities over 100 and up to 500 take the hundred rate. Quantities over 500 take the 1000 rate. See page 23 for postage rate.

Knight's "Pure Bred" Blackberries

In planting your Blackberry patch, select land that is full of humus and retains moisture well, for this crop ripens at a time when we can naturally expect dry weather, and if your patch is on land that quickly dries out, the crop will suffer. Culture for Blackberries is the same as raspberries, only they need more room and should be set 3 to 4 feet apart in the row and the rows from 7 to 8 feet apart.

Eldorado Blackberries

PROFITABLE—PRODUCTIVE—HARDY

We have grown practically all varieties of blackberries, but Eldorado is so much superior to all others that we now grow and sell only that one variety. Eldorado is unusually hardy. We have never known it to winter-kill or fail to produce an exceptionally fine crop of fruit. Even in the far Northwest it is grown without winter protection. The berries are very large, jet black and of excellent quality. They are borne in large clusters and ripen well together. In a word, Eldorado is the greatest Blackberry in cultivation and we can assure you that you will not be disappointed in it. Our plants are strong and heavily rooted.

PRICE

25	50	100	1000
\$0.75	\$1.25	\$2.00	\$15.50



Eldorado Blackberries.

Dewberries

We strongly recommend the growing of Dewberries for they come after raspberries are gone and before blackberries commence—when the market is bare of berries and prices are high. Dewberries thrive in any soil, even light land that will not grow other berries successfully. Get started with a patch of Dewberries this season and you will find it one of the most profitable parts of your farm.

Lucretia Dewberry

Acknowledged by all fruit growers and horticulturists to be the finest Dewberry grown. Lucretia commences to ripen from a week to ten days earlier than blackberries. The fruit is very large, of a shiny black color and deliciously sweet and luscious. Don't be without this wonderful berry. Our superior, heavily rooted plants cost no more than ordinary ones. Get your order placed early for our supply is limited.

PRICE

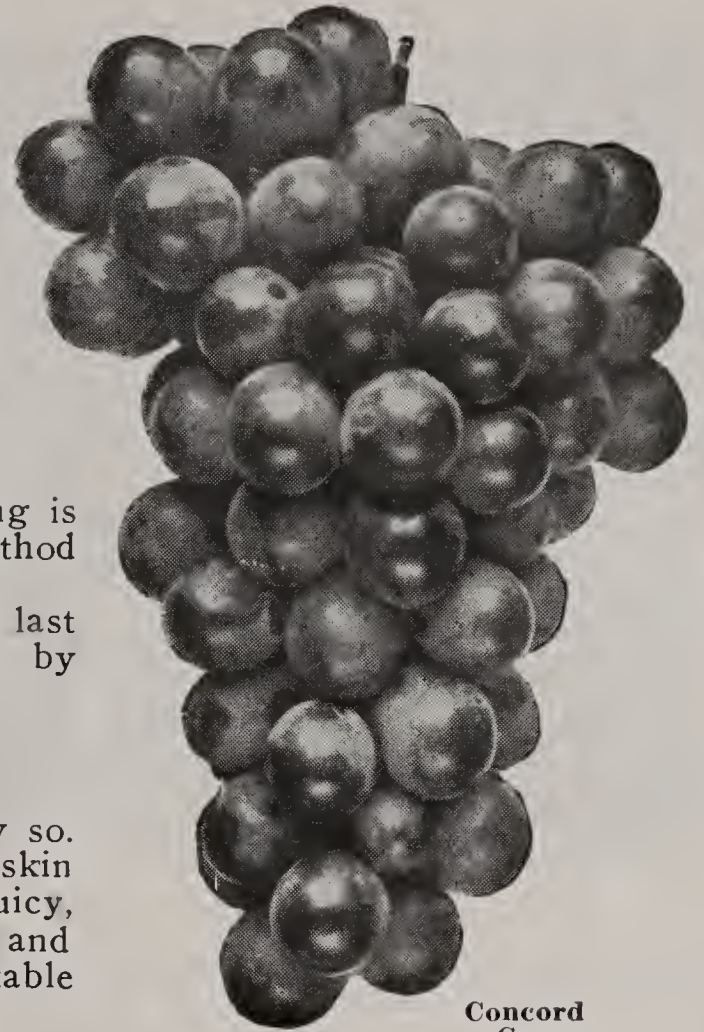
25	50	100	1000
\$0.75	\$1.25	\$2.00	\$15.50

For postage rate, see page 23.



Lucretia Dewberry.

Knight's "Pure Bred" Grapes



Concord Grape.

Any good dry soil with sufficient drainage is suitable for growing Grapes, if the exposure and the climate are favorable. Before planting, plow, harrow, and pulverize thoroughly down to a depth of 12 to 18 inches. Plant in rows 8 to 10 feet apart and the plants 10 to 12 feet in the rows. There are so many methods of pruning, different methods being adapted to different localities, that we will not dwell on that point, only to say that proper pruning is very essential to the successful growing of Grapes, and the method that is proving best in your locality is the one for you to follow.

We have a good supply of fine plants, but not enough to last through the season. Avoid disappointment and money loss by ordering today.

Concord

Decidedly the most popular Grape in America, and deservedly so. Bunch large, compact; berries large, covered with rich bloom; skin tender, but sufficiently firm to carry to distant markets; flesh juicy, sweet, pulpy, tender; vine strong grower, very hardy, healthy and productive. For general cultivation the most reliable and profitable variety grown.

Niagara

Occupies the same position among the white varieties as Concord among the black, the leading profitable market sort. Bunch and berries greenish white, changing to pale yellow when fully ripe. Skin thin but tough, quality much like Concord. Niagara will thrive and produce big crops almost anywhere. It does well in Michigan and south to the most southern states.

Moore's Early

This is the most popular early market Grape grown. It ripens ten days before Concord and always brings a good price. The fruit is larger than either Concord or Niagara. It has a beautiful dark blue color and the quality is excellent. We are glad to recommend Moore's Early very highly as we know it will please you.

	PRICE	Each	12	25	50	100	1000
Concord, 1-year, strong		\$0.15	\$1.00	\$1.50	\$2.50	\$4.50	\$38.00
Concord, 2-year, strong20	1.50	2.25	3.50	5.25	55.00
Niagara, 2-year, strong20	1.50	2.50	4.00	7.00	
Moore's Early, 2-year, strong20	1.50	2.50	4.00	7.00	



Washington Asparagus.

Knight's "Pure-Bred" Asparagus

Washington

The Department of Agriculture at Washington introduced this variety several years ago and it is now more widely grown than any other sort. The stalks are of a purplish green color, tender, large and of excellent flavor, but the thing that recommends it the most is its resistance to rust—a disease that has been a menace to Asparagus patches of other varieties. With proper care you can depend upon a patch of Washington Asparagus giving you an abundant supply of this most delicious of all spring vegetables for years to come.

PRICE	25	50	100	1000
	\$0.50	\$0.75	\$1.20	\$8.00

Palmetto

Palmetto is the old standby that for years has been grown so profitably by gardeners who make a business of producing Asparagus for market. It is early, large, very productive, and has a flavor unsurpassed. You make no mistake in setting either Washington or Palmetto.

PRICE	25	50	100	1000
	\$0.35	\$0.50	\$0.90	\$6.00

For postage rate, see page 23.

Knight's Choice Flowering Shrubs

At a Price You Can Afford to Pay

No orders accepted for less than \$1.00.

The last finishing touch to landscape planting—what wonderful effects can be had with these graceful, glowing shrubs—and at a cost everyone can afford. We believe you have never had the opportunity of buying them at so low a price before, and the stock is excellent, heavily rooted, sure to grow. Knight's enviable reputation of 45 years is behind each plant.



Althea—Rose of Sharon.

Althea - Rose of Sharon

This is one of the most valuable of all shrubs for it gives its profusion of large, highly colored flowers late in August—past the blooming season of most flowering shrubs. The flowers much resemble the tender hibiscus in form and are the color spots of fall just as the spireas and weigelas are of spring. The bushes are ornamental in shape and grow to a height of 8 to 10 feet, covering themselves in fall with beautiful double white, purple, red, rose and striped flowers.

Hydrangea Arborescens

(Hills of Snow)

The flowers of this shrub are much like those of the snowball in appearance. They are conspicuously white and enlivening during July, August and September. By keeping the crowns cut back each spring it makes a symmetrical dense hedge of from 3 to 5 feet in height. The plants are perfectly hardy and free from diseases.



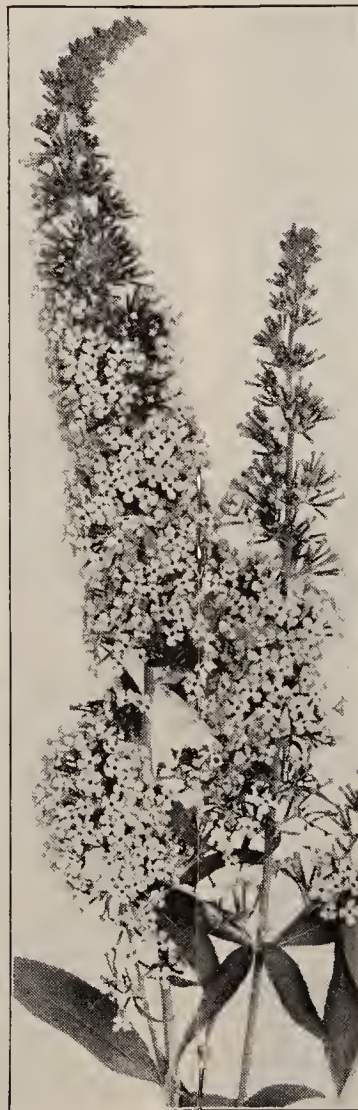
Hydrangea P. G.

Hydrangea P. G.

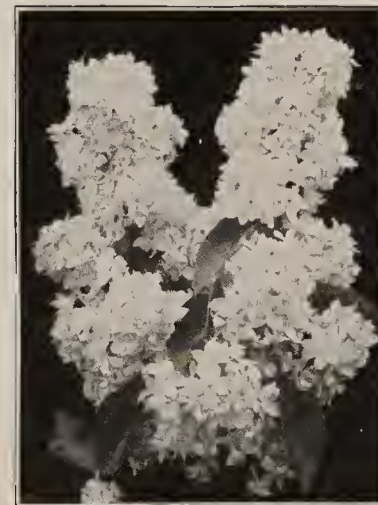
Everyone knows and loves this hardy old-fashioned shrub. The large spikes of greenish white blossoms first appear in August and last until autumn but as time goes on they change to pure white, then to a pinkish tinge and last to a rich bronze. No grounds are complete without a liberal planting of this grand old shrub.

Butterfly Bush - Summer Lilac

This bush grows from 4 to 6 feet in height and produces its beautiful lilac colored blooms from the tips of every particle of new growth. It flowers from July to September, but more profusely during August and at that time the mass of conspicuous purple and violet flowers attracts many butterflies, adding much to its attraction.



Butterfly Bush.



Persian Lilac.

Persian Lilac

This has become the most popular Lilac grown. The large trusses of deep purple flowers are borne in profusion and their sweet fragrance carries over the entire grounds.

Philadelphus - Mock Orange

One of the tallest shrubs grown and excellent for hedges as well as for individual planting. It flowers very profusely, much resembling strawberry blossoms, but larger, and its waxy white, fragrant bloom is a delight to all. Don't fail to plant at least a few Mock Orange.

Snowberry

This shrub has small pinkish flowers in June and July, followed by large clusters of milk-white berries that remain on the bushes far into the winter. The growth of this shrub is graceful and attractive and the combination of pink flowers and white berries on the same twig is charming.



Snowberry.

Deutzia

Gracilis. A dwarf shrub growing from 20 to 30 inches in height. Its graceful drooping branches are wreathed with pure white flowers in May. When used for borders it is most valuable and beautiful.

Pride of Rochester. This is the most hardy and popular of the Deutzia family. It grows from 6 to 8 feet in height and its mass of pinkish white bloom in June is a joy to all beholding it. It adapts itself to any type of soil or growing conditions and for specimen or mass planting it is indispensable.



Deutzia, Pride of Rochester.



Forsythia—Golden Bell.

Forsythia - Golden Bell

These attractive old shrubs, growing 6 to 8 feet tall, light up the garden with glowing masses of golden yellow before any other bloom appears in the spring; in fact, the flowers appear before the leaves and enliven a landscape that is otherwise leafless and bloomless.

Bush Honeysuckle

Tatarica rubra. For a tall hedge to screen an unsightly view there is no shrub so valuable, as it will grow from 10 to 12 feet high in a few years. Besides it is a beautiful thing both summer and winter as it is the first shrub to clothe itself with leaves in spring. Its light crimson flowers and luxuriant foliage are a delight in summer and the thousands of bright red berries give a charming touch of color to the winter landscape.

SEE PRICE LIST ON PAGE 23



Spirea Van Houttei.

FLOWERING SHRUBS—Continued.

Spirea Van Houttei

What would spring be without this most popular of all flowering shrubs, Bridal Wreath, as it is sometimes called. A mantle of beautiful white spreads over the entire country when Spirea Van Houttei puts forth its bloom in May and June. It can be used with striking effect in both individual and mass planting and if you are ever in doubt what to use for a certain location, then plant Bridal Wreath and you are sure to be right. Note—For hospitals, public grounds or private planting where a large quantity of Spirea is needed and price is an object, use the 18 to 24 inch grade for they are sturdy, well rooted plants and in a few years will be as large as the more expensive grades. You cannot equal our low prices anywhere and the quality of all of our shrubs is unsurpassed.

Weigela Eva Rathke

Similar in appearance to Weigela rosea but somewhat smaller in growth. It attracts much attention at blooming time for its profusion of brilliant carmine-red flowers with white throats.

Weigela Rosea

The most popular Weigela grown. It will attain a height of from 5 to 6 feet and its long, graceful arching branches, literally covered with delicate pink, bell-shaped blossoms during June, is a sight that cannot be forgotten. There is also a scattering of bloom all during the summer. The leaves are large and beautiful, free from disease and themselves add a charm to the landscape.

Hedge Plants

New Red Leaved Barberry

Never has a new shrub attracted universal attention as has this Red-Leaved Japanese Barberry. It is nearly identical to the green-leaved Barberry Thunbergi with the exception that its foliage is a rich lustrous bronze-red, changing in the fall to vivid orange-scarlet and red. Its only requirement is plenty of sunshine.

Amoor River Privet This Privet has all of the good qualities of California Privet but, in addition, is perfectly hardy and is the one that should be used wherever severe winter temperatures are experienced. It is used mostly as a clipped hedge but is also valuable for semi-screening and mass planting, as it is graceful in its growth and its rich dark green leaves stay on the branches longer than any other shrub.



Weigela Rosea.

Barberry Thunbergi No shrub in existence is so generally planted and has so many practical purposes as Japanese Barberry. It hasn't one serious fault and can be grown in semi-shady, moist, dry or sunny locations. When grown as specimen plants or as an edging to taller shrubs its graceful arching branches covered with the most luxuriant deep green foliage in summer and beautiful bright red berries all winter are the most attractive sight imaginable.

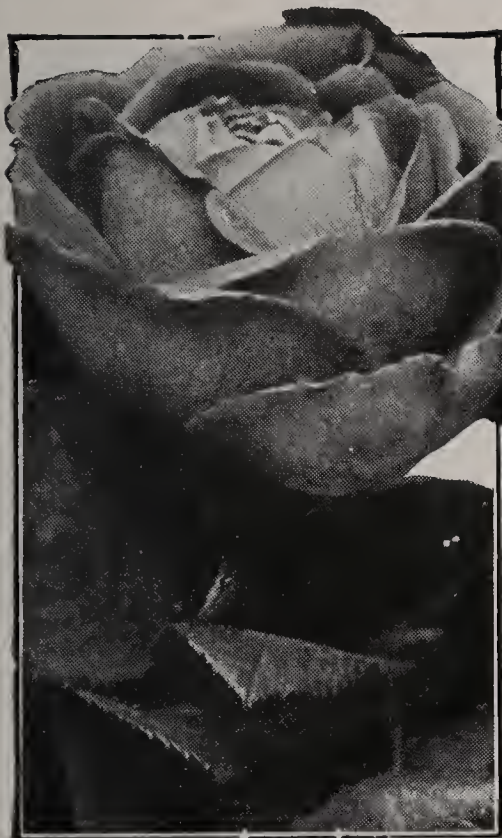


Beautiful Hardy Bush Roses

See page 23 for postage rate.

No other flower is so universally grown and loved as the Rose. In the past few years so many new and beautiful Roses have been brought out that it would be impossible to grow and list all of them; however, the ones described on this page have been selected for their outstanding beauty, hardiness of growth and profuse blooming qualities. They are all strong, heavily rooted, two-year plants and will not disappoint you. Compare our prices and note the saving by sending us your orders.

Price, each, 45c; 3 for \$1.25;
10 for \$3.50.



American Beauty.



General Jacqueminot.

American Beauty. Most widely known American Rose. Especially valuable for cut flowers. Deep pink, nearly crimson, large and very fragrant.

Frau Karl Druschki (White American Beauty). Lovely in bud and full bloom. Gorgeous, large, waxy white flowers in June with a final burst of bloom in the midst of the first snow.



Frau Karl Druschki.

Lady Hillingdon. An exquisite Hybrid Tea Rose with long pointed buds that open into gorgeous double blossoms. An entrancing deep apricot-yellow, the pride of every Rose grower.

Los Angeles. Flowers are large, beautiful in shape and continuous in bloom. It is a flame-pink toned with coral and shaded with gold at the base of petals. A gorgeous, outstanding Rose.

General Jacqueminot. A universal favorite. The perfectly formed, fragrant blossoms come early and are borne on long, graceful stems. In color a rich scarlet-crimson. Beautiful.

Ophelia. One of the most beautiful and popular Roses grown; the flowers are produced lavishly and are distinctive in their form. It is white tinted with yellow, rose, and salmon.

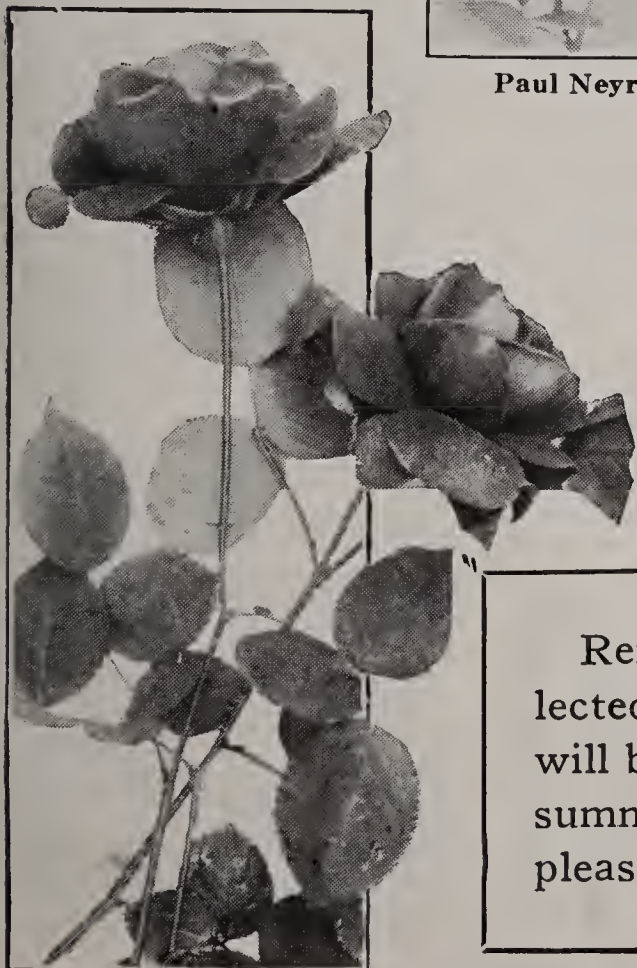
Gruss an Teplitz. The value of this Rose is its intense richness of color—a velvety crimson-red. It makes small plants but blooms profusely all summer.



Paul Neyron.

Paul Neyron. The largest variety in cultivation and grown by all Rose lovers. It blooms from June until November and is particularly good during autumn. The bloom is produced on long, smooth, thornless stems and is a clear rose-pink. Sometimes called "Pink American Beauty."

Pink Radiance. A gorgeous clear salmon-pink Rose of glowing loveliness. The bloom is very large and abundant, borne on long, strong stems. One of the finest of all Roses.



Gruss an Teplitz.

Price, each, 45c; 3 for \$1.25;
10 for \$3.50.

Compare the prices of these sturdy, heavily rooted, two-year Roses and notice how much money you can save by sending us your order.

Remember these are all selected strong 2-yr. bushes that will bloom beautifully this very summer and give you years of pleasure.



Los Angeles.

No Orders Accepted for Less Than \$1.00

HARDY BUSH ROSES—Continued.

Red Radiance. A duplicate of Pink Radiance in everything except color, this being a lovely brilliant crimson. Both Radiance Roses are valuable for cut flowers and should be planted freely.



Red Radiance.

Sunburst. This exquisite new glowing orange-rose slightly paling at edges of petals to resemble a true sunburst has captured the love of all Rose growers. It is one of the very best of the Hybrid Teas, blooms freely and is excellent for cut flowers. Sunburst has always sold for a high price, never less than \$1.00 each, until our present price this spring.



Sunburst.

Hardy Climbing Roses

Price, each, 45c; 3 for \$1.25; 10 for \$3.50.

Climbing American Beauty. This is the true American Beauty Rose, having the same lovely, fragrant, deep pink bloom, with the one exception that it has a strong climbing habit of growth. The abundant blossoms are at their best before the bush Roses commence and their loveliness is not excelled even by those grown in hot houses.

Crimson Rambler. This grand old rambler is a favorite everywhere on account of its brilliant color and sturdy habit of growth. Can be used as a climber or in bush form, and in either case its large clusters of beautiful crimson flowers cover the branches their entire length.

Dorothy Perkins. A beautiful shell-pink climbing Rose, the showiest and hardiest of the pink climbers. It has the same sturdy habits of Crimson Rambler and its flowers are borne in great clusters of from thirty to forty and sometimes more.

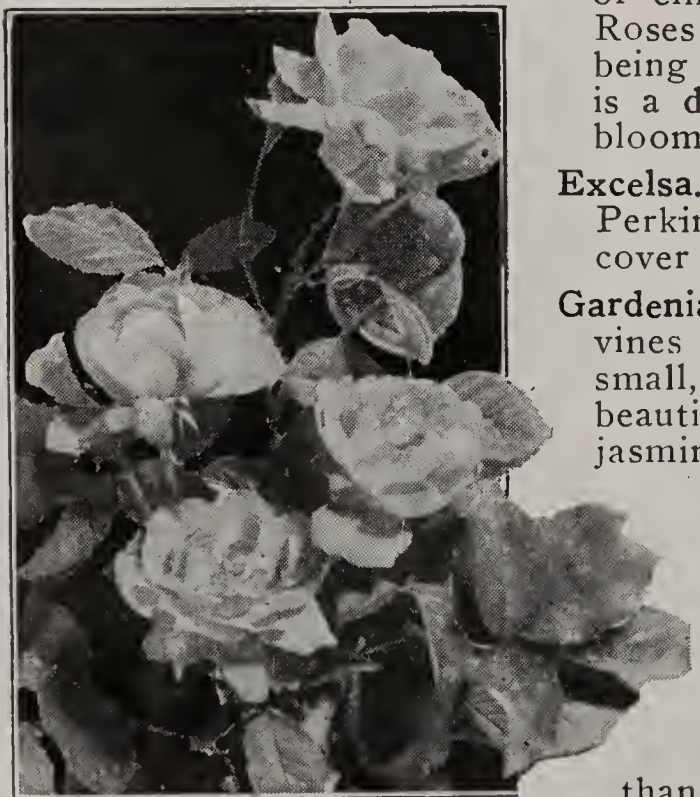
Dorothy Perkins, White. The same as Dorothy Perkins with the exception that the flowers are white. Borne in immense clusters the same as pink Dorothy Perkins.

Dr. W. Van Fleet. A new and desirable type of climber, with flowers as large as Tea Roses and admirable for cutting, the stems being from 12 to 18 inches long. The color is a delicate flesh-white, very attractive at blooming time.

Excelsa. This Rose is known as Red Dorothy Perkins. Its radiant blood-red clusters fairly cover the thrifty vines in early summer.

Gardenia. In early summer the Gardenia vines are literally covered with innumerable small, yellow buds which gradually open to beautiful creamy white flowers scented with jasmine.

Paul's Scarlet. This has been a decided sensation ever since its introduction several years ago. Many claim it to be the best climber grown. Its bloom, which is borne in large clusters, is a vivid scarlet which it retains until the petals fall. The individual flowers are larger than most climbers. Don't fail to plant some Paul's Scarlet this spring.



Paul's Scarlet.



Climbing American Beauty.

Evergreen Trees

All Specimen Evergreens Shipped by Express.

Never before such low prices on beautiful sturdy evergreens. We offer you two grades; TRANSPLANTS, which are heavily rooted and have splendidly formed tops from 10 to 18 inches in height, and SPECIMEN TREES which have been from two to four times transplanted and are ready for immediate showy effect. These latter are shipped with a ball of earth around the roots and burlapped.

American Arbor-Vitae. A rapid growing, beautiful evergreen with a soft bright green foliage from the ground up. Is used for specimen planting but very valuable for hedge work as it stands shearing

better than any other evergreen. Each, 35c; 3 for \$1.00. Specimen: Each, 75c; 3 for \$2.00.

Pyramidal Arbor-Vitae. This is a strikingly attractive tree as it is perfectly pyramidal in shape and the most compact and erect of the entire species. Foliage is a beautiful deep green and it retains its color throughout the entire year. Each, 35c; 3 for \$1.00. Specimen: Each, \$1.00; 3 for \$2.75.

Globe Arbor-Vitae (T. Globosa). Usually called Globe Evergreen, as its shape is absolutely round or globular. The tree, when fully grown, is not more than four feet high and, with its handsome shade of dark green, gives a distinction to any spot where it may be planted. Each, 35c; 3 for \$1.00. Specimen: Each, \$1.00; 3 for \$2.75.



Effective Evergreen Planting.

Hovey's Golden Arbor-Vitae. A small, hardy tree, very compact and elliptical in shape. The foliage is light green with a tinge of gold that is alluring and very distinctive. Each, 35c; 3 for \$1.00. Specimen: Each, \$1.00; 3 for \$2.75.

Irish Juniper. This charming tree immediately attracts attention on account of its glaucous sage green color and slender, erect formal habit of growth. It has a decided advantage over anything else you can use for formal effect in contrast with other trees. Each, 35c; 3 for \$1.00. Specimen: Each, \$1.00; 3 for \$2.75.

Mugho Pine. This is an excellent dwarf Pine—globe-shaped, with erect branches. The foliage is dark green and is especially beautiful in spring when the new growth appears. Each, 35c; 3 for \$1.00. Specimen: Each, \$1.00; 3 for \$2.75.

Pfitzer Juniper (J. Pfitzeriana). One of the newer evergreens but acknowledged as the most popular of the spreading type. It has a peculiar, graceful, spreading growth all its own. Flowing lines are especially valuable in landscape work and this Juniper seems to meet this requirement better than any other; however, it will stand severe pruning if it outgrows its location. Foliage is a beautiful green with blue-gray tinge. Each, 35c; 3 for \$1.00. Specimen: Each, \$1.00; 3 for \$2.75.

Colorado Blue Spruce. One of the most beautiful evergreen trees grown. Its glittering steel-blue foliage is indeed lovely. No ornamental planting is complete without one or more Blue Spruce. Does well in nearly any soil. Each, 35c; 3 for \$1.00. Specimen: Each, \$2.50; 3 for \$7.00.

Norway Spruce. This has long been the most popular Spruce, as it grows to a lofty noble tree and its foliage and manner of growth is, indeed, beautiful. It can be used equally well for specimen planting or in groups where contrast is desired. Each, 35c; 3 for \$1.00. Specimen: Each, \$1.00; 3 for \$3.75.



Pyramidal Arbor-Vitae.



Globe Arbor-Vitae.



Norway Spruce.

If you wish other varieties or large specimen trees, write us for special quotations.

Knight's Quality Fruit Trees



Wealthy (Fall).

Stayman's Winesap. (Late Winter). An extra large bright red Apple with a wonderful flavor. Its appearance and quality makes it a favorite in all markets.

Grimes' Golden. (Winter). Bright golden yellow color, fine grained, juicy, and excellent flavor. Medium to large in size.

Red Delicious. (Winter). Probably the most popular Apple grown, commanding the highest prices always. Everyone knows the shape, color and taste of Delicious. Never before have trees of this variety been sold at our low price. Order heavily this spring.

Jonathan. (Winter). Another favorite. Beautiful highly colored fruit of the very best quality. Trees bear young. A profitable variety.

Baldwin. (Winter). A widely known variety and one of the leading sorts for market and storage. Large deep red colored fruit with firm flesh.

Northern Spy. (Winter). An old favorite. Fruit very large and of a delightful spicy flavor. Greenish yellow streaked with red. In demand every year and at top prices.

Hyslop Crab. Recognized as the best Crab Apple. Large, round and smooth with red skin overspread with purple bloom. Flesh yellow and crisp.

Knight's fruit trees carry the same guarantee as our plants and ornamentals. No one has ever made a legitimate claim to us without getting satisfaction. You must be pleased with your fruit trees. Our reputation is behind them.

No orders accepted for less than \$1.00.

All trees shipped by express.

You'll be surprised at the unusually low prices for the exceptionally fine quality fruit trees we list. And let us stress the fact that our trees are not second size or "whips." With the exception of Peaches, which are 7/16 inch in diameter, all of our trees are from 5 to 6 feet high and 9/16 inch in diameter. This constitutes the ideal tree for planting, well balanced between root and top, the very best that can be had. Examine other catalogs and see the big saving you can make with Knight's trees. We offer only the most profitable varieties and in the best grades.

Apples

60c each; \$5.50 for 10.

2 yr., 5 to 6 ft., 9/16" in diameter.

Yellow Transparent. (Early Fall). Large yellow fruit, splendid flavor, heavy bearer. Trees hardy and healthy and grow rapidly.

Wealthy. (Fall). Large, highly colored red Apple of splendid flavor and quality. The first high quality apple to ripen in the Fall. It is a sure cropper and no better cooking or eating Apple is grown.

McIntosh. (Late Fall). A strikingly beautiful bright red Apple with white, crisp flesh. It is a favorite everywhere because of its excellent quality.



Red Delicious (Winter).

Pears

65c each
\$5.50 for 10

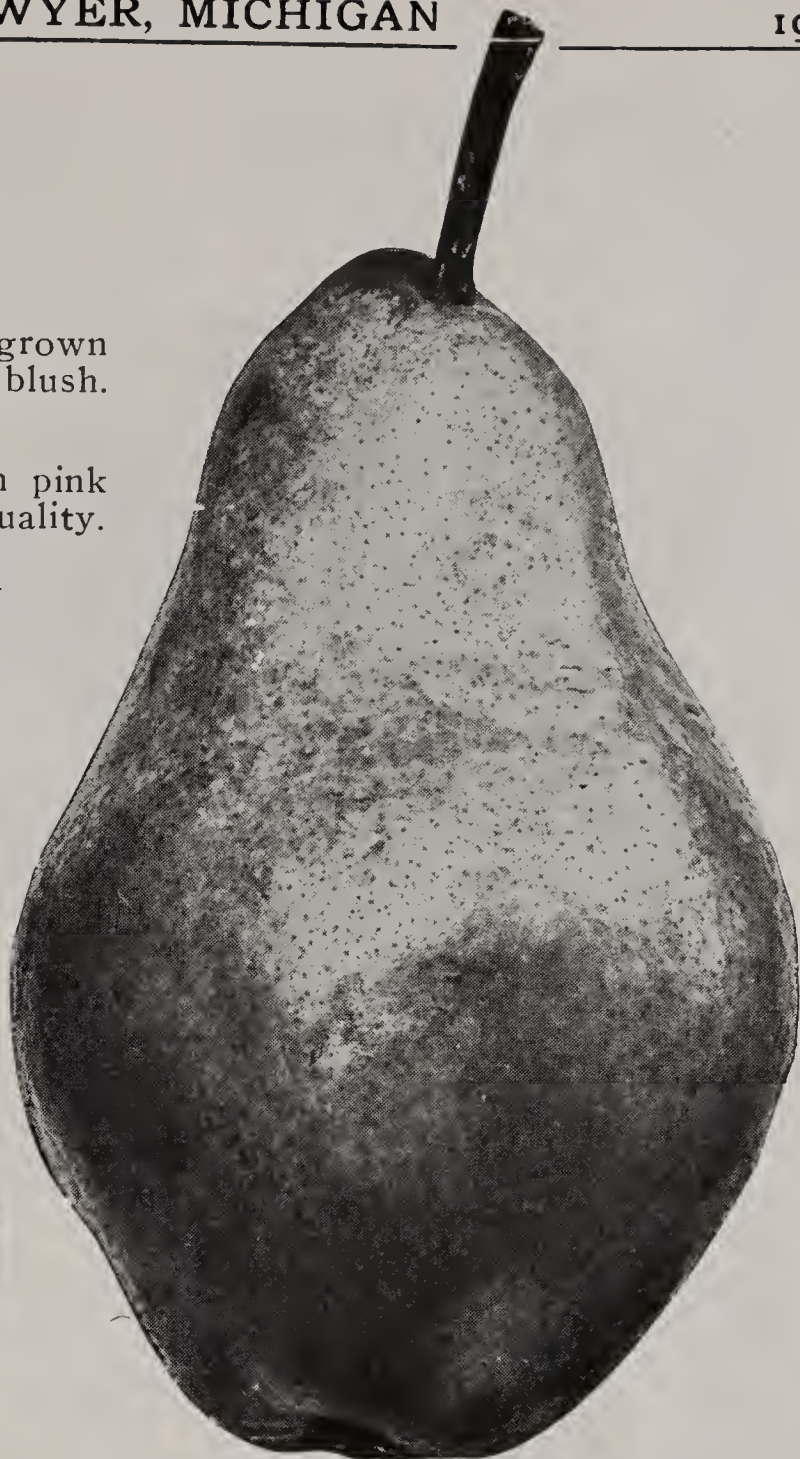
2 yr., 4 to 6 ft., 9/16" in diameter.

Bartlett (Midseason). The best known and most widely grown Pear. A heavy producer of large golden fruit with a red blush. Always in demand—a money maker.

Clapp's Favorite. (Summer). A large yellow Pear with pink cheek that ripens about August 1st. Of splendid eating quality.

Kieffer. (Late). A sure cropper and heavy yielder. Used mostly for canning. Trees make a healthy growth.

Seckel. (Sugar Pear). Medium sized, ripens in September. Exceptionally fine flavor and quality, and always in demand at good prices.



Bartlett.



Seckel.

If any other firm offers you trees at a lower price than ours, be sure they are equal in diameter and height before ordering.

Peaches

45c each
\$4.00 for 10
\$35.00 for 100

4 to 5 ft., 7/16" in diameter.

Rochester. (Early). A large yellow freestone Peach with red markings. Fine for eating, canning and shipping. Tree is a strong grower and hardy.

South Haven. (Early). Originated at South Haven, Mich., and is one of the most valuable Peaches grown. It is large, golden yellow in color with red cheek. No Peach has a finer flavor or is more beautiful. Ripens two weeks earlier than Elberta and is always a money maker.

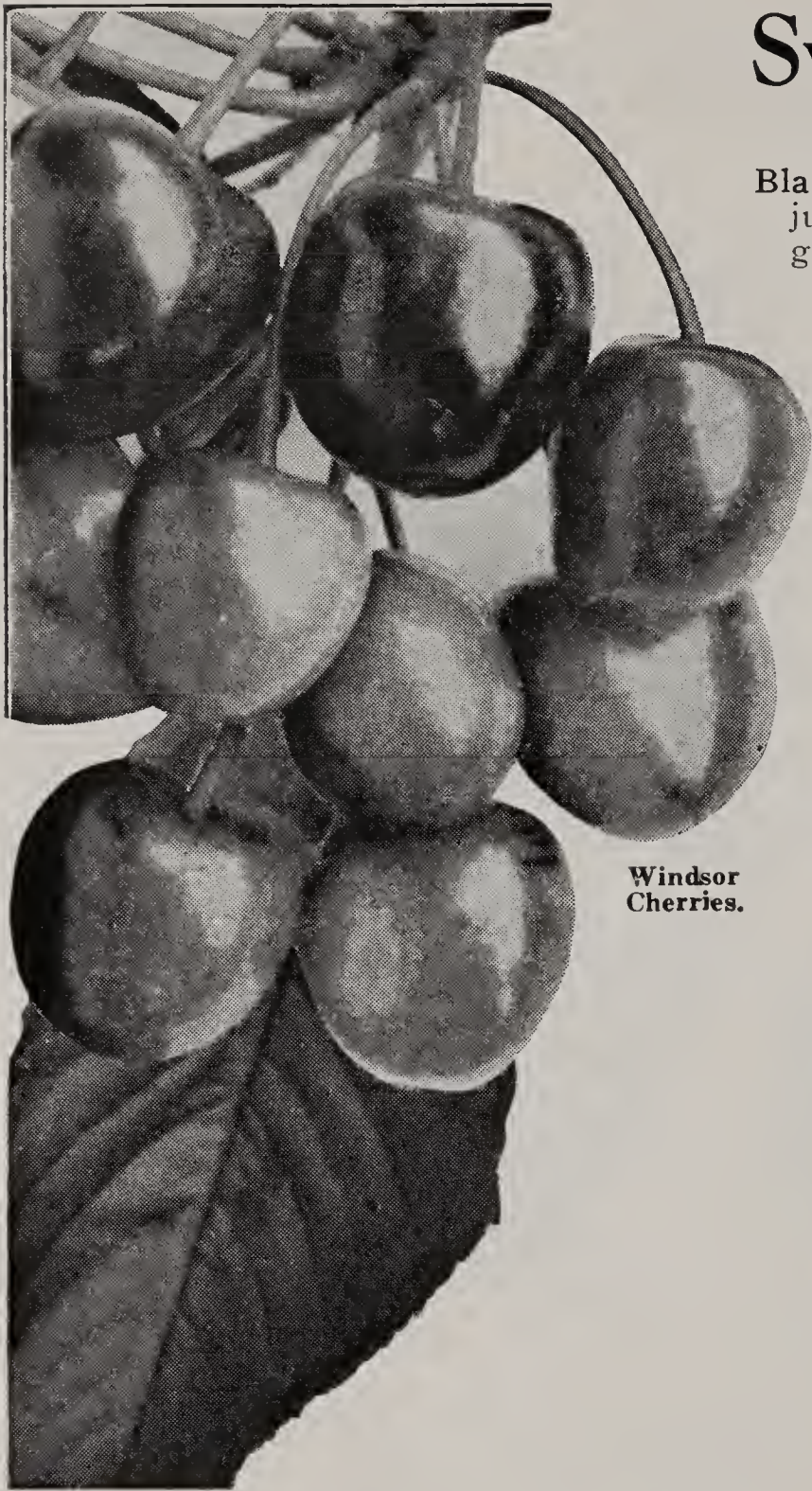
Elberta. (Midseason). This large yellow freestone Peach is the leader wherever Peaches are grown. Beautiful in appearance, of good quality and a heavy cropper. It has made more money for growers than any other variety. You'll probably never have the opportunity to buy such high quality trees as ours at such a low price again.

J. H. Hale. (Midseason). Extra large freestone yellow Peach with deep carmine blush. The flesh is firm and is of excellent quality. No Peach compares with it for size, color, and flavor.

Gold Drop. (Medium late). A medium size freestone golden yellow Peach of the highest quality. Very popular for canning on account of its delicious rich flavor.



South Haven.

Windsor
Cherries.

Sweet Cherries

65c each
\$5.75 for 10
\$47.50 for 100

4 to 5 ft., 9/16" in diameter.

Black Tartarian. A dependable producer of large black juicy fruit of the best quality. Trees are vigorous in growth and heavy croppers. Ripens late June.

Windsor. A large liver-colored Cherry. Wonderful flavor. A late variety of great value as it is a consistent bearer and is always in demand.

Bing. Ripens in July. Fruit is large, firm, nearly black, and with exceptionally fine flavor. Trees hardy.

Schmidt. The fruit of Schmidt is a deep crimson red, large, very attractive, and with a wonderful flavor. A heavy producer and always in demand.

Napoleon. (Yellow). A large beautiful yellow Cherry with bright red cheek. Heavy bearer and a general favorite.

If any other firm offers you trees at a lower price than ours, be sure they are equal in diameter and height before ordering.



Montmorency Cherries.

Sour Cherries

50c each
\$4.00 for 10
\$30.00 for 100

4 to 5 ft., 9/16" in diameter.

Large Montmorency. Ripens 10 days later than Richmond and is the best late Sour Cherry grown. The fruit is large, attractive, and of excellent flavor. A wonderful canning Cherry. Trees are vigorous growers and can be depended upon as heavy producers.

Early Richmond. This is the earliest Sour Cherry and is very popular for pies and canning. Of medium size, bright red color, and a heavy cropper. Trees hardy and easy to grow.



Burbank Plums.

Plums

65c each
\$5.50 for 10
\$50.00 for 100

5 to 6 ft., 9/16" in diameter.

Abundance. One of the most popular Plums grown. Fruit is medium to large with thick meat and a small pit. Amber and red in color. Splendid quality and popular for canning.

Burbank. Ripens in July. The best Japanese variety. Orange-yellow color dotted with red. Flesh meaty, yellow, and of splendid quality. Trees hardy and grow well on all soils.

German Prune. A medium size dark purple Plum of the highest quality and a favorite for canning purposes. Ripens in September. Trees are hardy and grow to good size.

Monarch. A very large dark purple Plum, very firm, of the finest quality and flavor. Ripens in October and always demands a fancy price in market. Trees are vigorous and productive.

Read Carefully Before Making Out Order

ORDER EARLY. Do not delay placing your orders until you are ready to plant. The earlier orders are placed the better it is for you and for us. All orders are booked in rotation as received, therefore, it is to your advantage to get your order placed early before varieties you wish are gone.

HOW TO ORDER. Use the order sheet found in this catalog, being sure to write your name and address plainly, and fill out all blanks carefully with reference to where you want your plants shipped, whether you want them sent by express, freight or mail, and at what time.

COMPLAINTS. Complaints, if any, must be made within ten days after receipt of stock.

SHIPPING SEASON commences about March 15th and continues until about May 15th.

HOW WE SHIP. Express and parcel post are much the safer way. We guarantee express and parcel post shipments to reach destination in good condition. Raspberry, blackberry and other heavy plants can be shipped safely by freight early in the season. However, all freight shipments go at consignee's risk.

TERMS. Cash with order, or part cash when order is sent, the balance to be sent before shipment.

REMITTANCES. Send money by Check, Draft, Post Office Money Order, Express Money Order or Registered Mail. Currency sent in a letter without registering is at sender's risk.

Choice Gladiolus Bulbs FREE

No flower garden is complete without a liberal planting of gorgeous, free flowering, many colored Gladioli.

Our "Knight's Choice Gladiolus Mixture" has beautified thousands of homes and many of our customers write us that it is the very finest collection they have ever seen. And now we are giving more bulbs FREE with plant and shrubbery orders than ever before. This is your opportunity to have a beautiful Glad garden at no cost to you whatever. Read below:

For every order, accompanied by cash, and reaching us on or before April 1st, we will, if you request, include free bulbs from our "Choice Mixture" as follows:

For Each \$2.00 Order—
15 Bulbs Free.

For Each \$5.00 Order—
40 Bulbs Free.

For Each \$10.00 Order—
100 Bulbs Free.



Gladiolus.

A BARGAIN

Occasionally labels are misplaced on plants in field or packing house and we cannot be sure what variety they are. Some days we have more of certain varieties dug than we can ship on orders. All such stock we call BARGAIN PLANTS. These are plants from our very best varieties and will give excellent fruit at a considerable saving.

\$3.50

per

Thousand

Sold only in thousand quantities.

100 Gladiolus Bulbs Only \$1.25

Take advantage of this unusual offer. Remember these are strong, healthy, full flowering size bulbs ready to give you a riot of color and beauty this very summer. This mixture is made up from the very best named varieties, some rare and expensive ones included. For years this same mixture has been used by us and has proven so satisfactory that it now takes tens of thousands of bulbs to supply the demand.

25 bulbs for 50c.

50 bulbs for 70c.

100 bulbs for \$1.25.

See next page for postage rate.

KNIGHT'S PRICES FOR 1935

IMPORTANT NOTICE—All plants shipped by express go charges collect. If mail shipment is wished, add postage as shown in table at bottom of this page.

DISCOUNT FOR EARLY ORDERS

We allow a special discount of 10% from catalog prices on all orders sent in before March 1st, and a 5% discount for orders received between March 1st and 20th. Cash in full to accompany each order.

No orders accepted for less than \$1.00.

Strawberry Plants

	25	50	75	100	200	300	400	1000
Gem	\$0.85	\$1.50	\$2.00	\$2.45	\$4.50	\$6.50	\$7.50	\$17.00
Mastodon75	1.00	1.40	1.75	2.90	3.75	4.60	10.50
Aroma35	.65	1.00	1.20	1.85	2.25	3.00	7.00
Beauty35	.65	1.00	1.20	1.85	2.25	3.00	7.00
Blakemore35	.50	.70	.85	1.50	1.90	2.20	4.85
Cooper35	.65	1.00	1.20	1.85	2.35	3.00	7.00
Dr. Burrill35	.45	.70	.85	1.50	1.90	2.20	4.85
Dorsett45	.75	1.00	1.25	2.00	2.70	3.85	7.50
Fairfax45	.75	1.00	1.25	2.00	2.70	3.85	7.50
Gibson35	.45	.70	.85	1.50	1.90	2.20	4.85
Grand Champion60	1.00	1.40	1.75	2.50	3.25	4.25	9.50
Harvest King35	.45	.70	.85	1.50	1.90	2.20	4.85
Pearl35	.65	1.00	1.20	1.85	2.35	3.00	7.00
Premier35	.65	1.00	1.20	1.85	2.35	3.00	7.00
Senator Dunlap35	.45	.70	.85	1.50	1.90	2.30	4.85

Hardy Ornamental Shrubs

	Each	10	50
Althea	18 to 24 in. \$0.25	\$2.00	\$ 9.00
Barberry, Green	12 to 15 in. .15	1.20	5.45
Barberry, Red	12 to 15 in. .60	5.00	23.75
Butterfly Bush	18 to 24 in. .25	2.00	9.00
Deutzia Gracilis	12 to 18 in. .25	2.00	9.00
Deutzia, Pride of Rochester	18 to 24 in. .20	1.60	7.20
Forsythia	18 to 24 in. .20	1.60	7.20
Bush Honeysuckle	18 to 24 in. .25	2.00	9.00
Hydrangea Arborescens	18 to 24 in. .35	3.00	13.60
Hydrangea P. G.	18 to 24 in. .25	2.00	9.00
Persian Lilac	18 to 24 in. .35	3.00	13.60
Philadelphus	18 to 24 in. .20	1.60	7.20
Amoor River Privet	12 to 18 in. .15	1.00	4.50
Snowberry	18 to 24 in. .20	1.60	7.20
Spirea Anthony Waterer	10 to 12 in. .20	1.60	7.20
Spirea Van Houttei	18 to 24 in. .10	.80	3.60
Weigela Rosea	18 to 24 in. .25	2.00	9.00
Weigela, Eva Rathke	18 to 24 in. .35	3.00	13.60

To Compute Amount of Postage on Your Order

First ascertain the group in which you are located and then refer to list below which will tell you the amount of postage to send.

Group 1—Central and Northern Michigan, Southeast Wisconsin, Northeast Illinois, Central and Northern Indiana, Western Ohio.

Group 2—Balance of Wisconsin, Illinois, Indiana and Ohio.

Group 3—Minnesota, Iowa, Missouri, Arkansas, Kentucky, Tennessee, North Carolina, Virginia, West Virginia, Pennsylvania, New York.

Group 4—North Dakota, South Dakota, Nebraska, Colorado, Kansas, Oklahoma.

Group 5—Montana, Wyoming, Idaho, Utah, California.

Group 1—Add 10c for each 100 Strawberry or Asparagus plants.

Group 2—Add 14c for each 100 Strawberry or Asparagus plants.

Group 3—Add 21c for each 100 Strawberry or Asparagus plants.

Group 4—Add 28c for each 100 Strawberry or Asparagus plants.

Group 5—Add 35c for each 100 Strawberry or Asparagus plants.

25 Raspberry or Blackberry plants take the same postage as 100 Strawberry or Asparagus plants

6 Shrubs, Roses or Grape vines take the same postage as 100 Strawberry or Asparagus plants.

100 Gladiolus bulbs take the same postage as 100 Strawberry or Asparagus plants.

Knight's Special Collections

at

Special Bargain Prices

See Page 23 for Postage Rates

Special Strawberry Garden

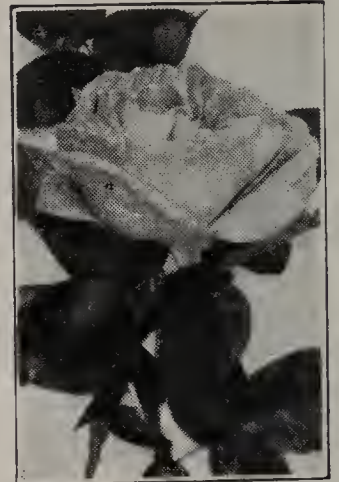


- 100 Mastodon
- 100 Premier
- 100 Blakemore
- 40 Choice Glads (Free)

All for \$3.50

Sturdy 2-Year Roses

- 2 Frau Karl Druschki
- 2 General Jacqueminot
- 2 Los Angeles
- 2 Red Radiance
- 2 Sunburst



Only \$3.25
for the 10

Complete Evergreen Entrance Planting

- 2 Pyramidal Arbor-Vitae
- 2 Globe Arbor-Vitae
- 2 Pfitzer Juniper

These 6 Beautiful Evergreens
for Only \$5.00

Shrub Bargain Collection

- 5 Spirea Van Houttei
- 2 Spirea Anthony Waterer
- 2 Weigela Rosea
- 1 Forsythia
- 2 Hydrangea P. G.

This Complete Planting
for Only \$1.50



DAVID KNIGHT & SON

SAWYER,
MICHIGAN